

---

# KI6501 Data Manager

## Software User Manual

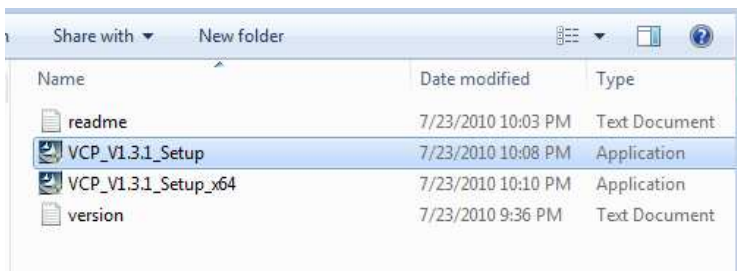
### CONTENTS

<b>1. Installation of USB Virtual COM Port driver software .....</b>	<b>2</b>
<b>2. Installation of KI6501 Manager Software .....</b>	<b>2</b>
<b>3. Connecting KI6501 to PC (Personal Computer) and launching KI6501 Manager .....</b>	<b>4</b>
<b>4. Operation instructions.....</b>	<b>5</b>
<b>4.1 KI6501 Manager’s User Interface.....</b>	<b>5</b>
<b>4.2 Tool Bar Operations: COM, Connect, Get Data, Save Data,     Graph Data .....</b>	<b>6</b>
<b>4.3 Menu Bar operations: File, Device, Data, Setting, Help .....</b>	<b>10</b>

---

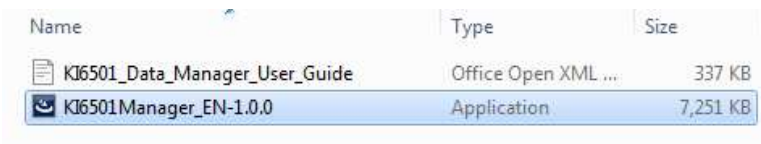
## 1. Installation of USB Virtual COM Port driver software

Select and double click to execute the file, “VCP\_V1.3.1\_Setup” in the provided CD, see picture below. Follow instructions prompted on PC to complete the installation.

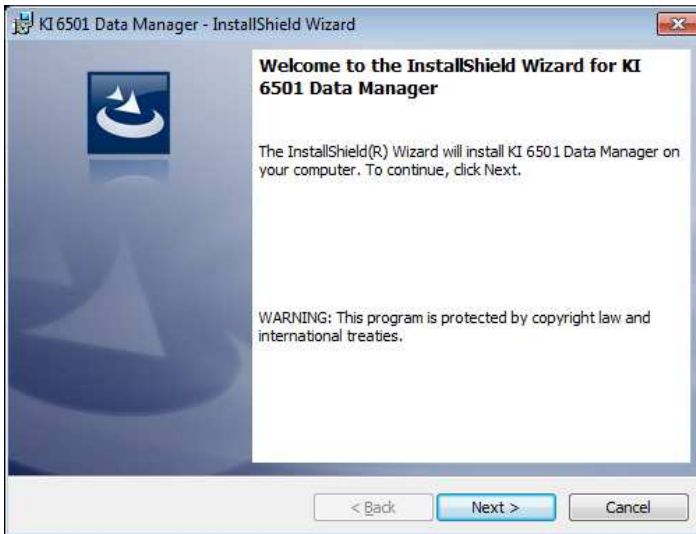


## 2. Installation of KI6501 Manager Software

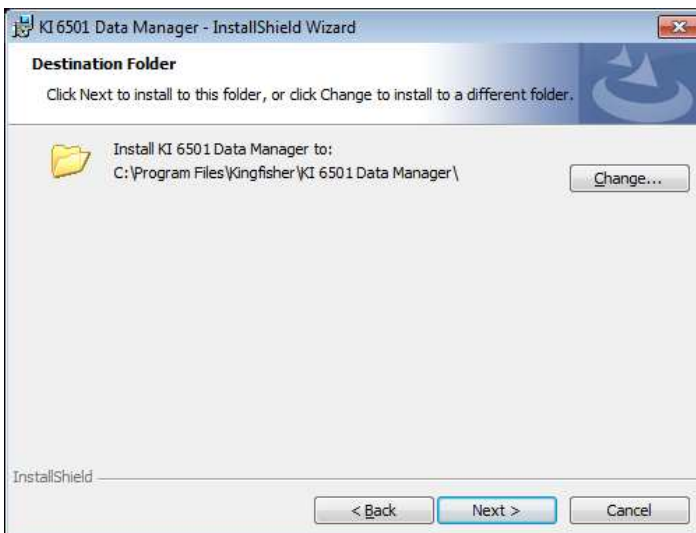
Select and double click to execute the file, KI6501Manager\_EN-1.0.0.exe in the provided CD, see picture below.



Click on [Next] to continue with the installation.



Click on [Next] to install the programs in the default directory or click on [Change] to change install directory.



---

Click on [Finish] to complete program installation.

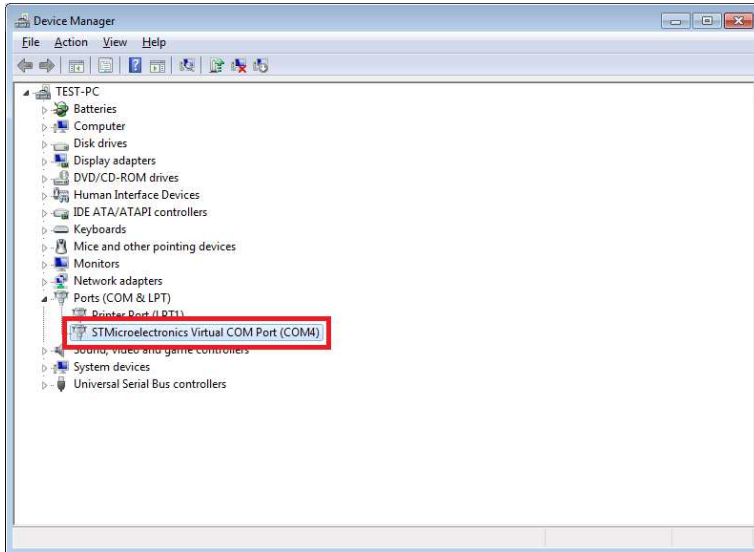


### **3. Connecting KI6501 to PC (Personal Computer) and launching KI6501 Manager**

#### ***Connecting KI6501 to PC***

Connect KI6501 to PC using the provided USB cable. Switch on KI6501 and the instrument's USB Driver will be installed on PC.

The USB Driver (STMicroelectronics Virtual COM Port) and its associated COM Port can be viewed with Device Manager of the PC's Window Operating System, see picture below.



### ***Launching KI6501 Manager***

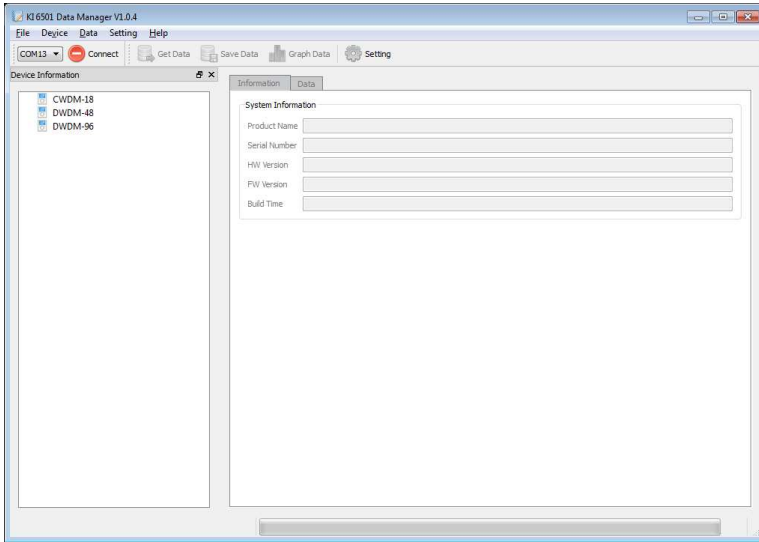
Double click on file, “KI6501Manager\_EN1.0.0.exe” in the directory where the Data Manager Software was installed.

Alternatively, launch the KI6501 Manager by double clicking on the KI6501 Manager Icon on PC’s desktop.

## **4. Operation instructions**

### **4.1 KI6501 Manager’s User Interface**

Picture below shows the User Interface of KI6501 Manager upon launching the software.



## 4.2 Tool Bar Operations: COM, Connect, Get Data, Save Data, Graph Data

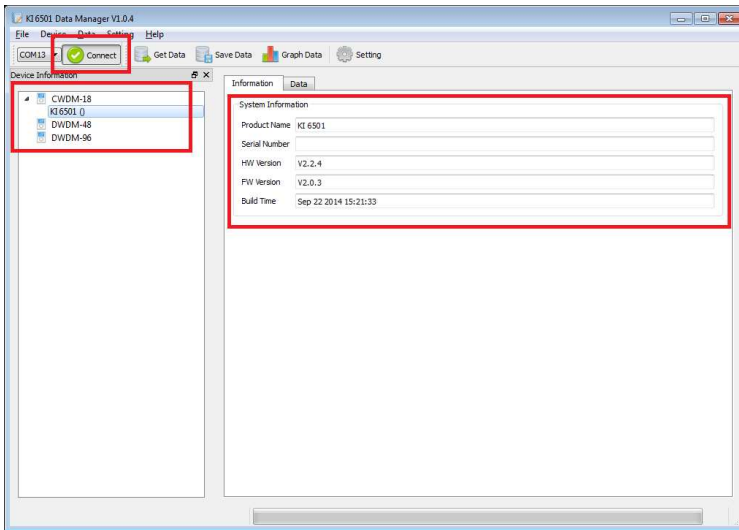
### COM

If the correct USB virtual COM port has not been selected automatically by KI6501 Manager when it was launched, manually select the appropriate port number. Refer to section 3 to find out which COM port to select. "COM4" should be selected in the example.

### Connect

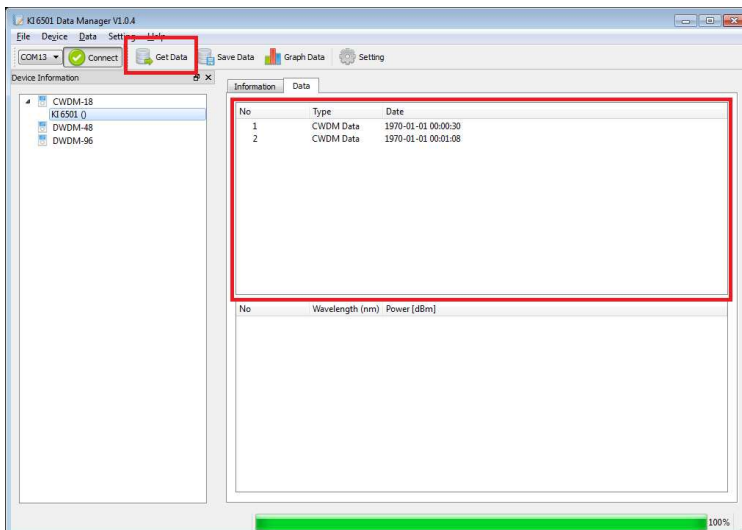
Click this to initiate communications between KI6501 and PC. It will be automatically recognized and display on the device information window. The system information of KI6501 will be

listed on Information Tab as shown in picture below.



## Get Data

Click this to list all the test data files stored in KI6501 on Data Tab, see picture below.

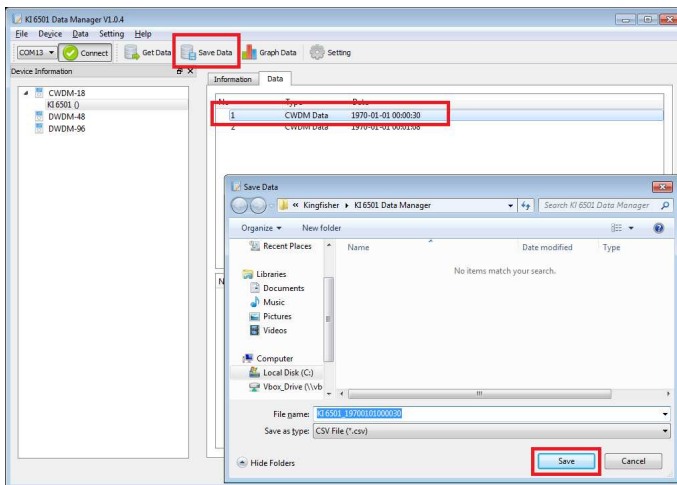


---

## Save Data

Select the desired test record file, test data saved in the record file will be displayed on Data tab. If the cursor is not on the specific data, an error will be occurred.

To save the selected test data to record file on PC, click on “Save Data” on Tool Bar and follow the prompted instruction as shown in picture below.



Default save directory: data will be saved in the same directory in which the Data Manager is installed.

Default save file name: P/N\_date/time of record saved.txt.

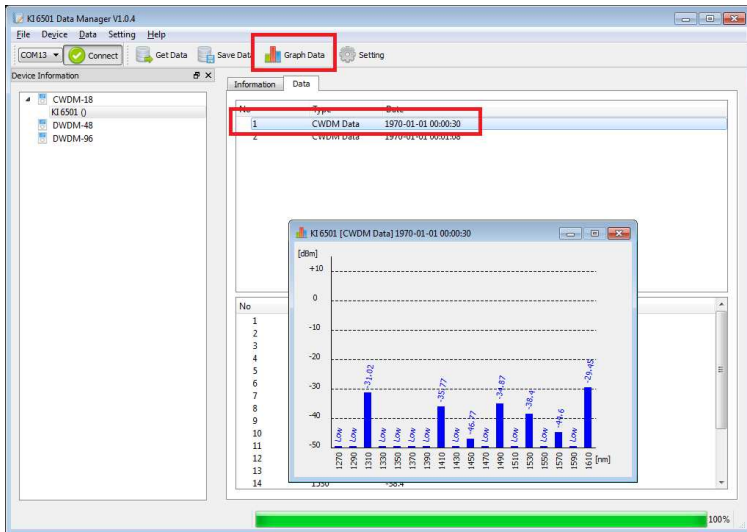
Example) KI6501\_20120809202732.txt

## Graph Data

Select the desired test record file and click on Graph Data. A pop-up window showing test data in graphical form will be



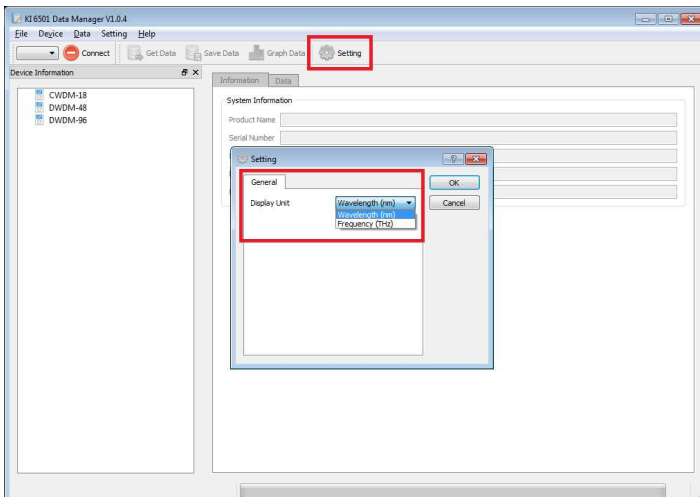
displayed; see picture below.



## Setting

This option can be used to select wavelength unit to be displayed.

The available unit selection: Wavelength (nm), Frequency (THz).



---

## 4.3 Menu Bar operations: File, Device, Data, Setting, Help

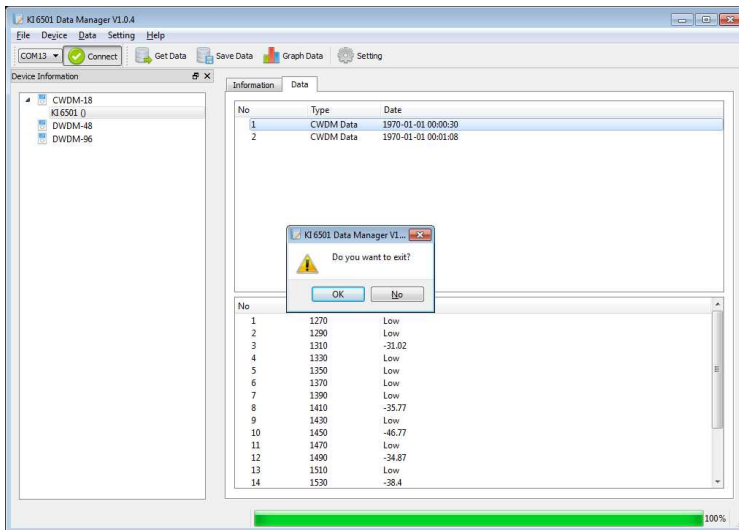
### File

Open: Open the saved data file.

Save: This has the same function as Save Data in Tool bar.

Exit: Click on this to exit KI6501 Manager.

See picture below



### Device

Connect: This has the same function as Connect in Tool bar.

### Data

Get Data: This has the same function as Get Data in Tool bar.

Save Data: This has the same function as Save Data in Tool bar.

Graph Data: This has the same function as Graph Data in Tool bar.

---

## **Setting**

Setting: This has the same function as Setting in Tool bar.

## **Help**

About: show the information about the software.